

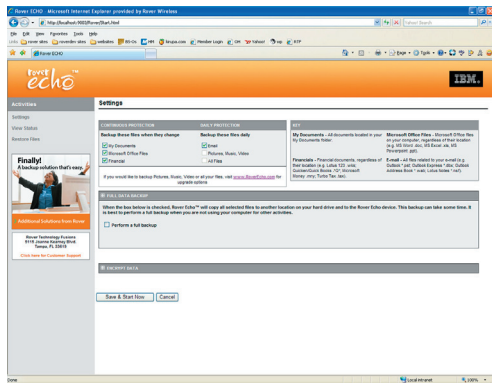
Quick Start Guide

Installation Instructions

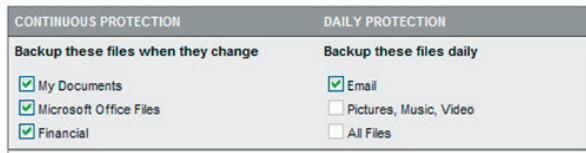
- 1 Before Installation – please disable or close any firewall software such as McAfee or Symantec.
- 2 If you are using the Rover Echo Card, there is a sliding lock on the side of card. Slide the lock to unlock the USB connector flap and lift flap. Install USB plug on Echo card into any available USB port on target computer.
- 3 If using the Rover Echo External Hard Drive simply plug the USB cable provided into any free USB port on target computer.
- 4 A message will appear indicating found new hardware.
- 5 A new window opens with an option to Launch Rover Echo using program on device.
Select OK.
- 6 Your Internet browser will automatically open directing you to our download site. If it fails to launch automatically, go to www.RoverEcho.com/install.
- 7 Select **Download.**
- 8 Accept the End User License Agreement and select **Continue.**
- 9 Complete the registration form entering all required information.
- 10 Registration numbers may be entered with or without dashes.
- 11 Select **Validate Registration.**
- 12 A new window will appear. Select to **Download the Echo installation software.**
- 13 A file download window will appear. **Select Run.**
- 14 The file will download and a Security Warning may appear. **Select Run.**
- 15 The software will begin to load. A Win-Zip self extractor window will open and a command prompt window will open.
- 16 Your local Anti-Virus (if installed) may indicate you need to authorize or decline the script.
Authorize the script.
- 17 A message appears telling you the installation may take up to 3 minutes.

Software Configuration: First Run

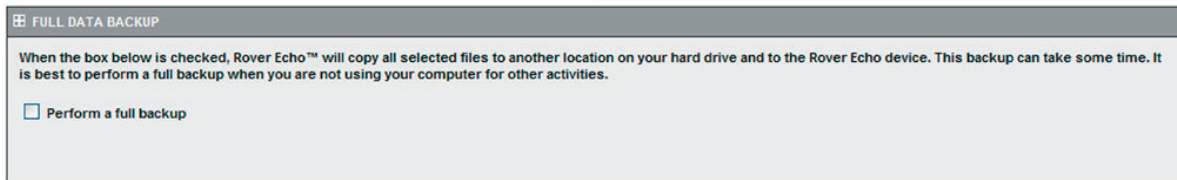
1 A new browser window opens to the Echo Settings Page.



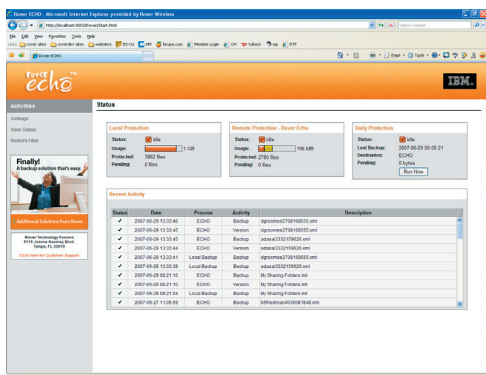
2 In the settings section select your desired backup files by **checking** the box next to the desired file types.



3 If you would like to perform a full backup of all the file types you selected now, scroll down to the Full Data Backup section and **check** the box indicating "Perform a full backup." A full backup can be done at any-time, and we suggest you allocate a few hours when you are not using your system. A window will appear indicating that the initial backup may take quite some time depending on the size of the data pool to be replicated. It is best to perform this function when you are not using your computer for other functions. Scroll to the bottom of the page and select "**Save & Start Now.**"



4 Allow the initial backup to run. Progress may be monitored through the View Status option in the left panel. To verify that Rover Echo is working: Create a Word document and save it. Then go to the Setting Page where you will see the file backed up locally and to the Echo device.



5 For further confirmation you can locate the files on your computer at c:\RealTimeBackup or on your Echo device :/Rover/.